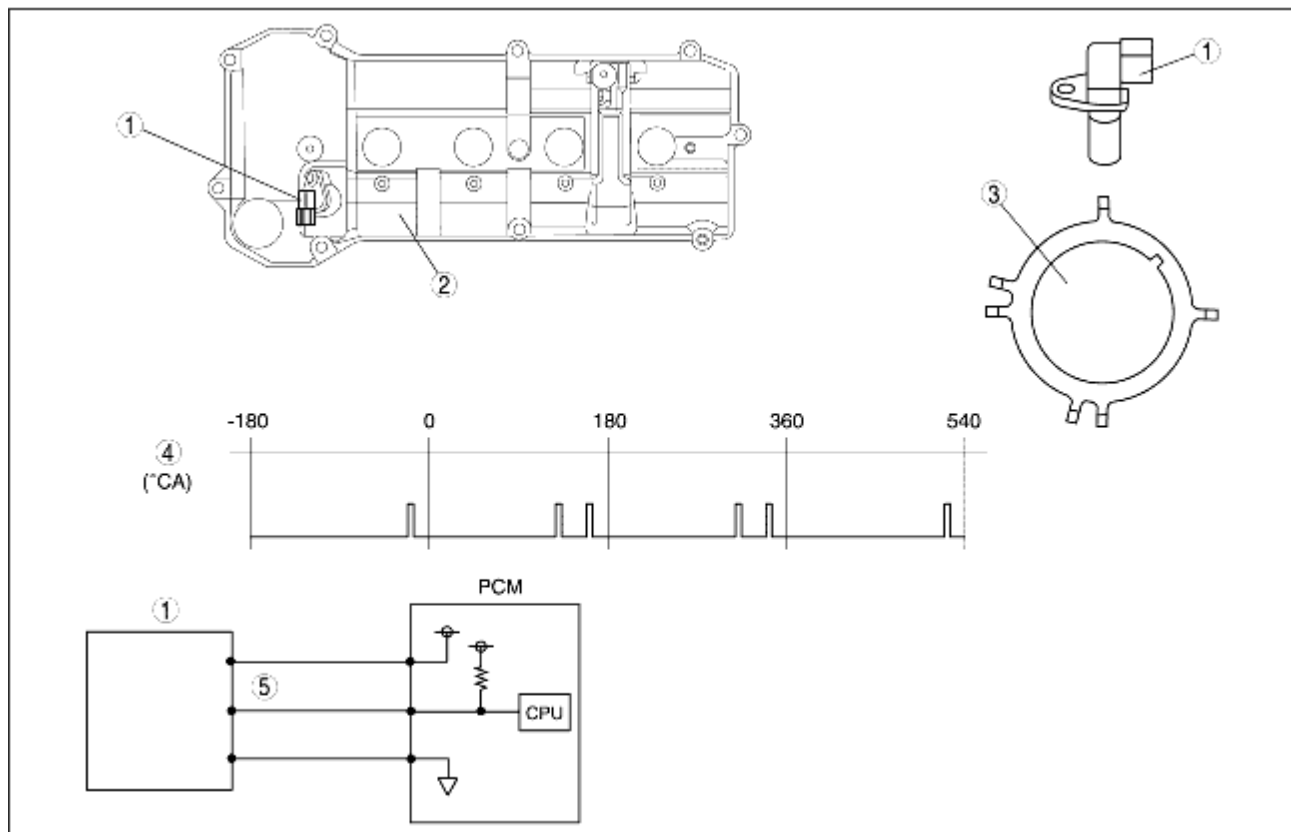


# CAMSHAFT POSITION (CMP) SENSOR CONSTRUCTION/OPERATION [ZJ, Z6]

B3E014018230T02

- The CMP sensor is installed at a 30° tilt to the cylinder head cover.
- The CMP sensor detects six pulses with one rotation of the camshaft by the projections set on the intake-side camshaft.
- A GMR element has been adopted.



B3E0140T508

1	CMP sensor
2	Cylinder head cover
3	Camshaft
4	Crank angle (°CA)
5	Sensor output signal